

tina givens™

TGP-A3033

Kristen SLIP

FEATHER LIGHT SLIP
WWW.SEWTINAGIVENS.COM

SIZING IN US

XS ... 2
S 4-6
M 8-10
L 12-14
XL 16-18

SIZING IN UK

XS..... 4-6
S 8-10
M 12-14
L 16-18
XL ... 20-22

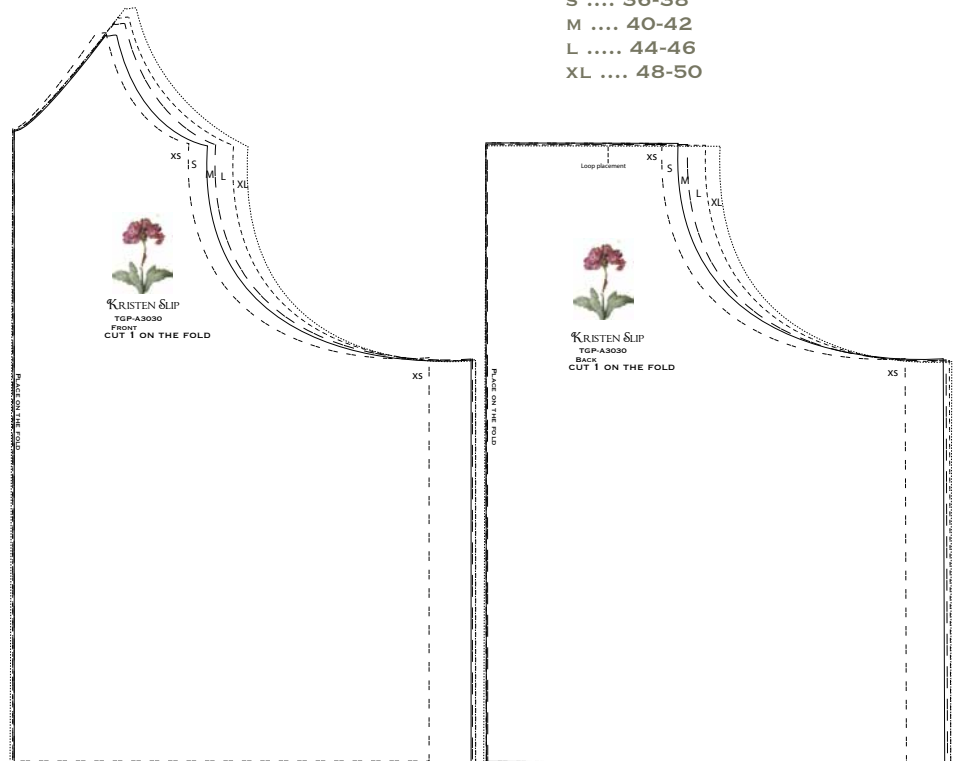
SIZING EURO

XS... 34
S ... 36-38
M ... 40-42
L 44-46
XL 48-50

Sew On

YOU HAVE DOWNLOADED this perfect sewing pattern by Tina Givens Design for personal purposes. No part of this pattern should be duplicated or reproduced for any reason. We want you to create this garment for your own personal use. Do not share this sewing pattern with others. This is the honor code of Sew Tina Givens and Tina Givens Design.

All designs and art © Tina Givens. No part of this product may be reproduced in any form. "All designs, art, photography and images are protected by federal copyright law. Designs are not to be reproduced for commercial sale. All rights are reserved.



FABRIC REQUIREMENTS

Slip .. 54" wide fabric only
2-2/3 yards or 2.43 meters

If making two to layer use
contrasting and complimentary
fabric.

Plus leather lace 3/16" wide or
5-6mm wide.
2 yards or 2 meters

WWW.SEWTINAGIVENS.COM

QUESTIONS 919.848.9400

OR EMAIL US AT INFO@TINAGIVENS.COM

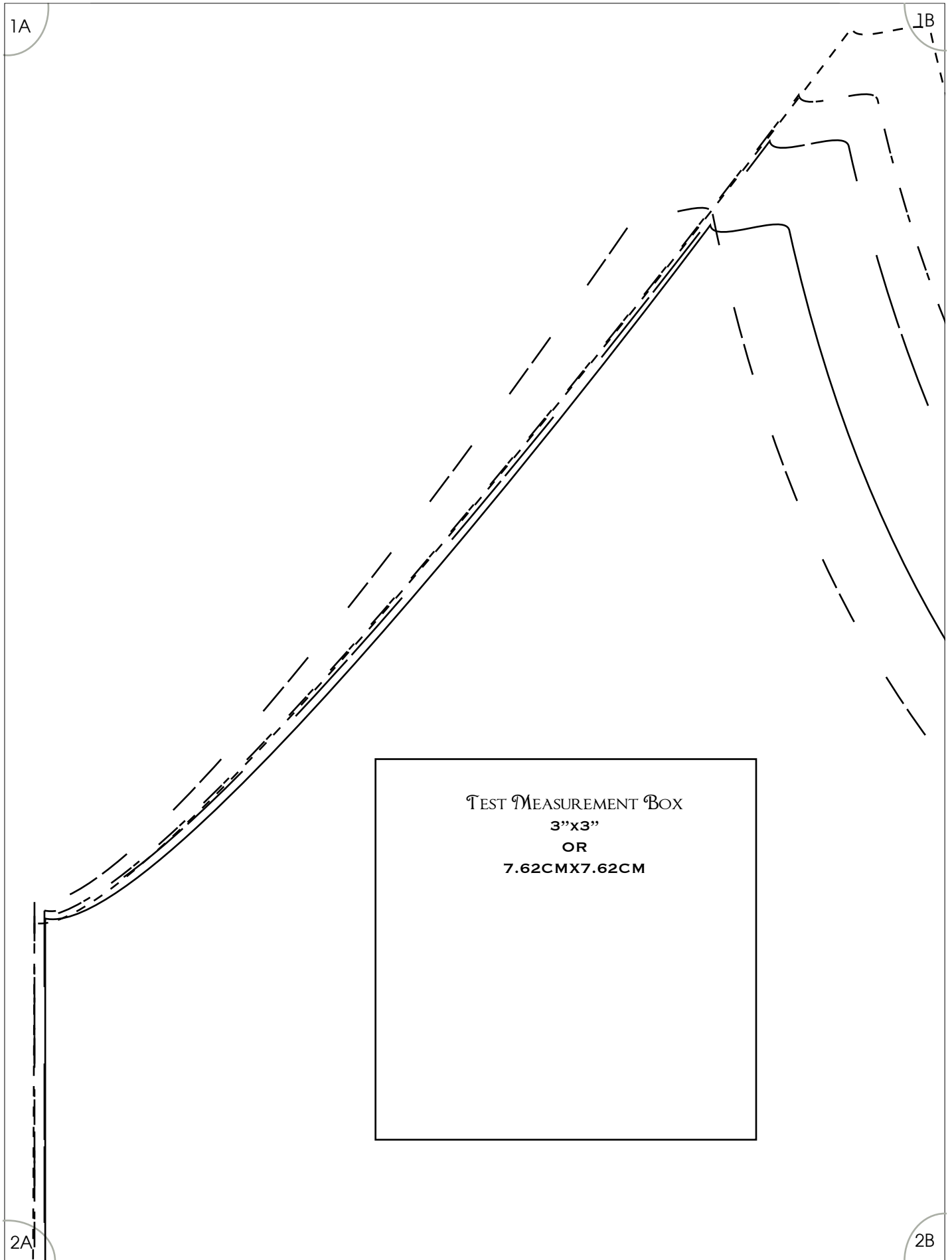
1A

1B

TEST MEASUREMENT BOX
3"x3"
OR
7.62CMX7.62CM

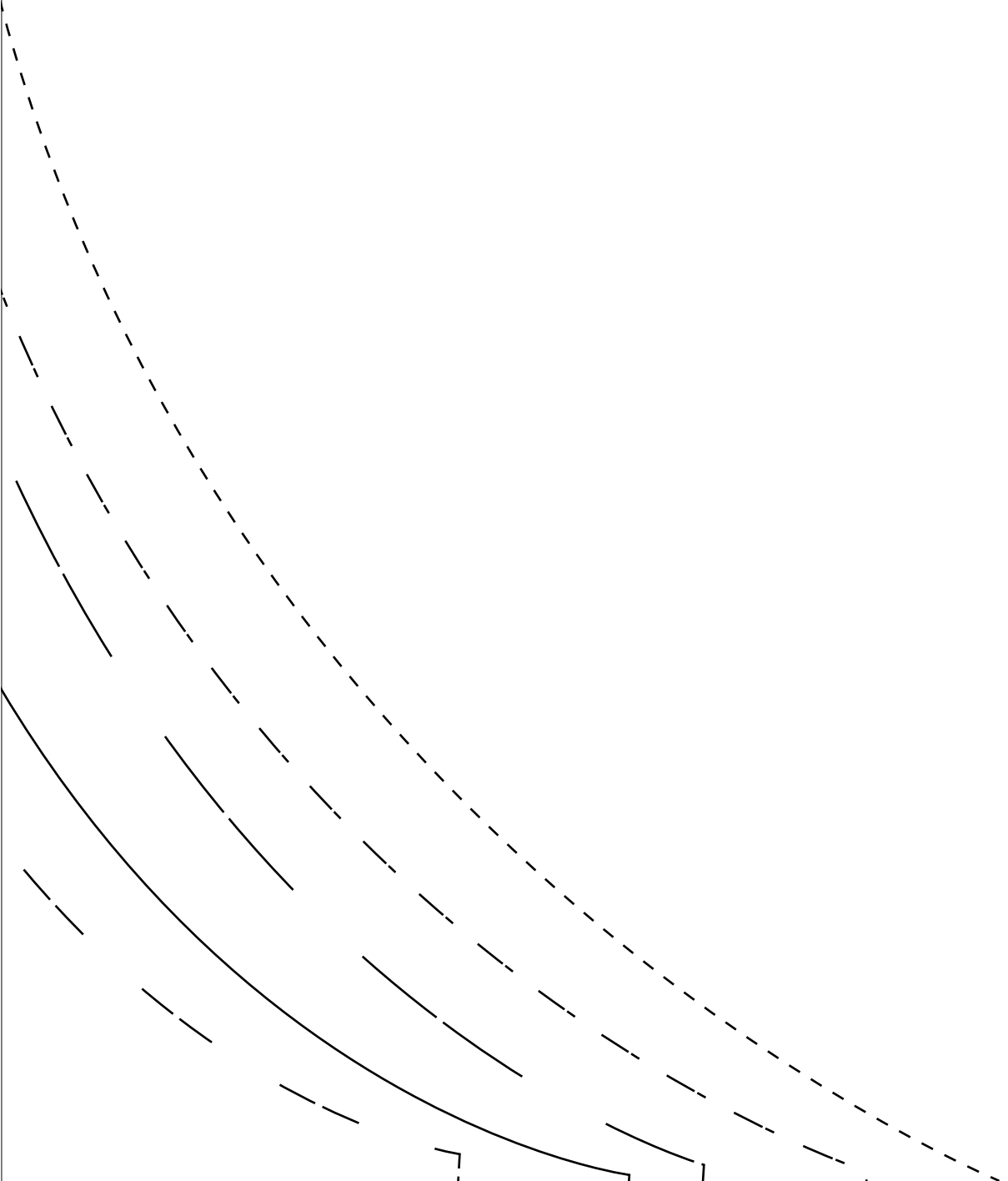
2A

2B



1B

1C



XS

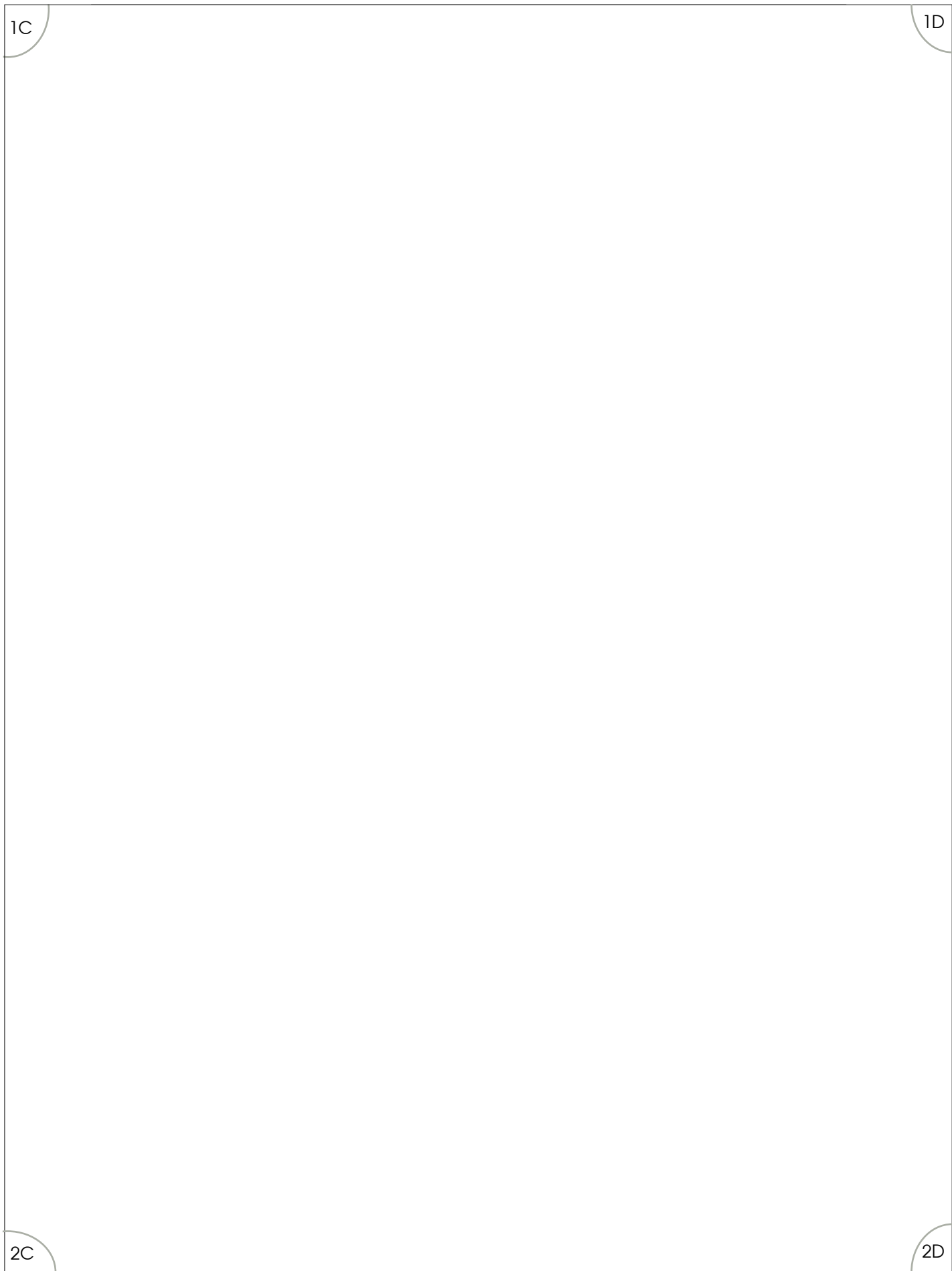
S

M

I

2B

2C

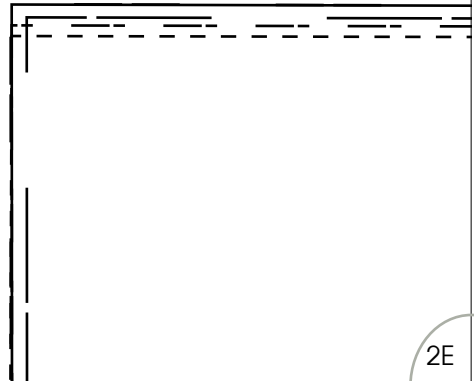


1D

1E

2D

2E



1E

1F

XS

Loop placement

2E

2F

1F

1G

2F

2G

S

A A

1G

1H

©tina givens

2G

2H



KRIST
TGP-A
FRONT
CUT 1

2B

2C



XL

TEN SLIP

A3030

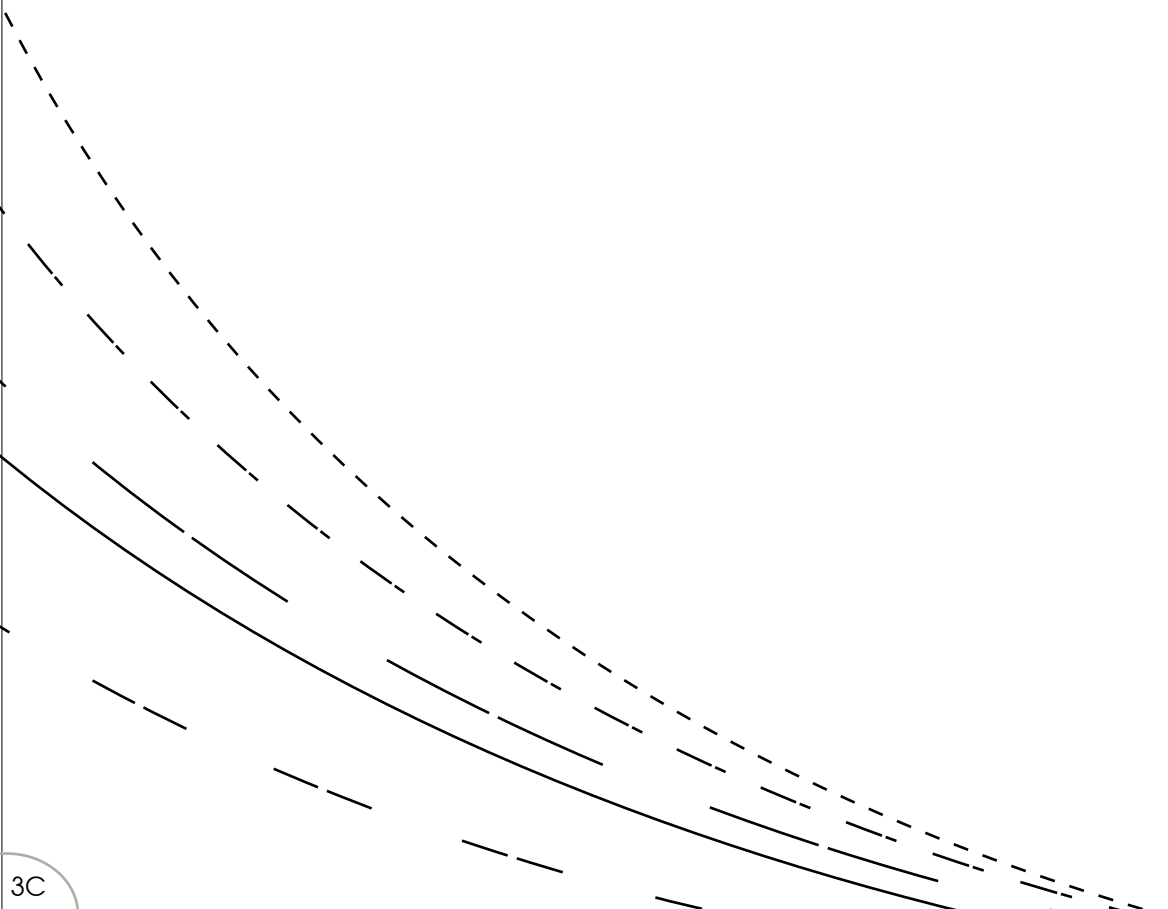
ON THE FOLD

3B

3C

2C

2D



3C

3D

2D

2E

3D

3E



KRISTEN SLIP

TGP-A3030

2F

2G

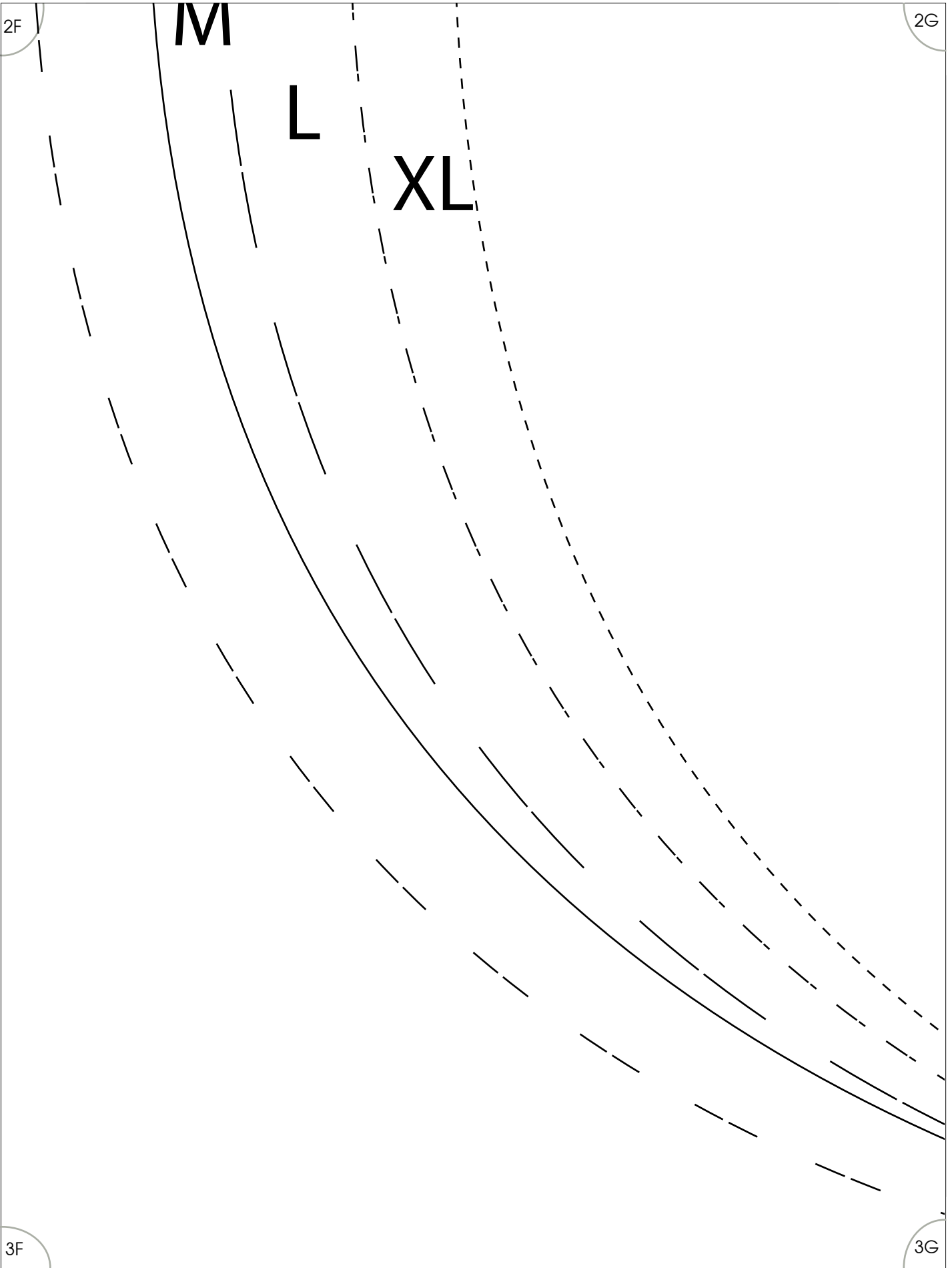
M

L

XL

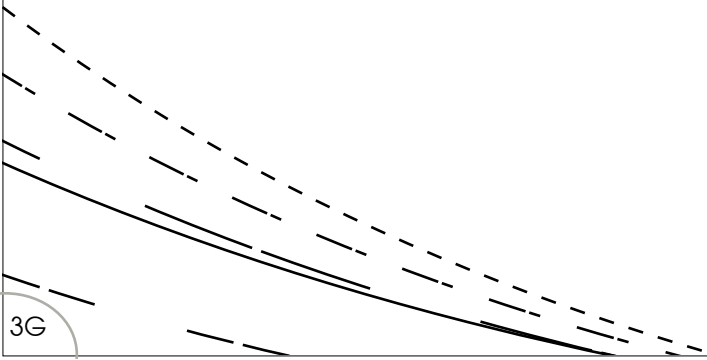
3F

3G



2G

2H



3G

3H

3A

3B

PLACE ON THE FOLD

4A

4B

3B

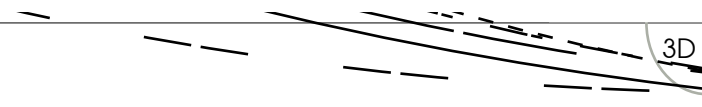
3C

4B

4C

3C

3D



4C

4D

3D

XS

PLACE ON THE FOLD

3E

4D

4E

3E

3F

**BACK
CUT 1 ON THE FC**

4E

4F

3F

3G

DLD

4F

4G

3G

3H

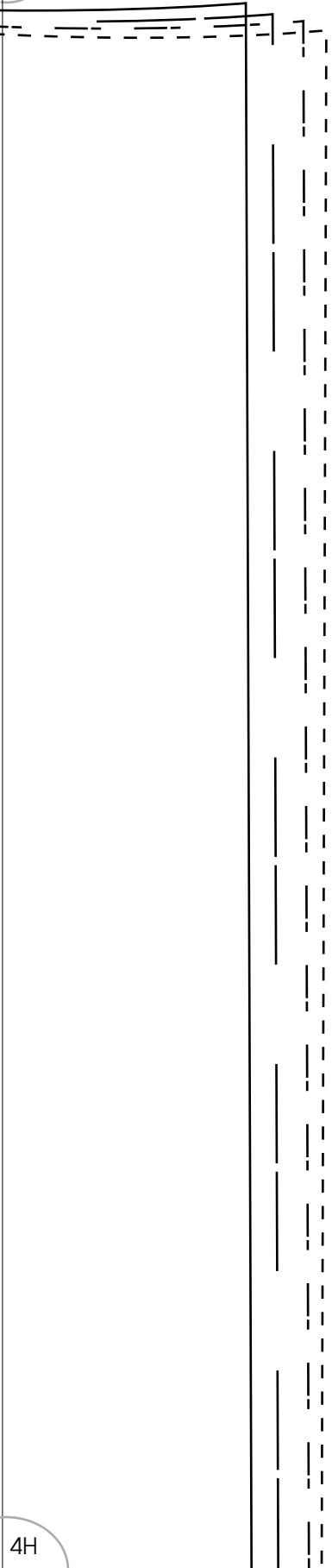
XS

4G

4H

3H

3I



4H

4I

4A

4B

5A

5B

4B

4C

5B

5C

4C

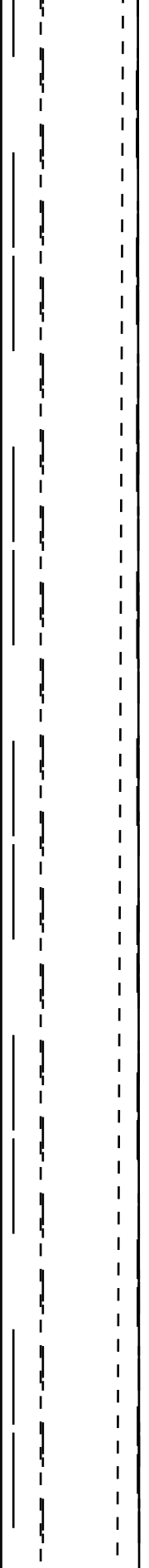
4D

5C

5D

4D

4E



5D

5E

4E

4F

5E

5F

4F

4G

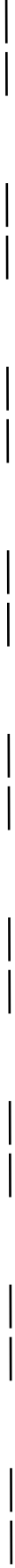
5F

5G

4G

4H

tina givens™



5G

5H

4H

4I

5H

5I

5A

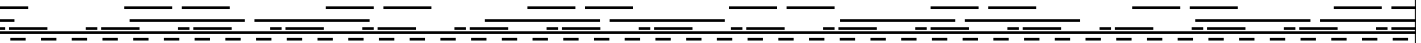
5B

6A

6B

5B

5C

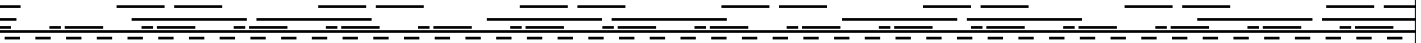


6B

6C

5C

5D



6C

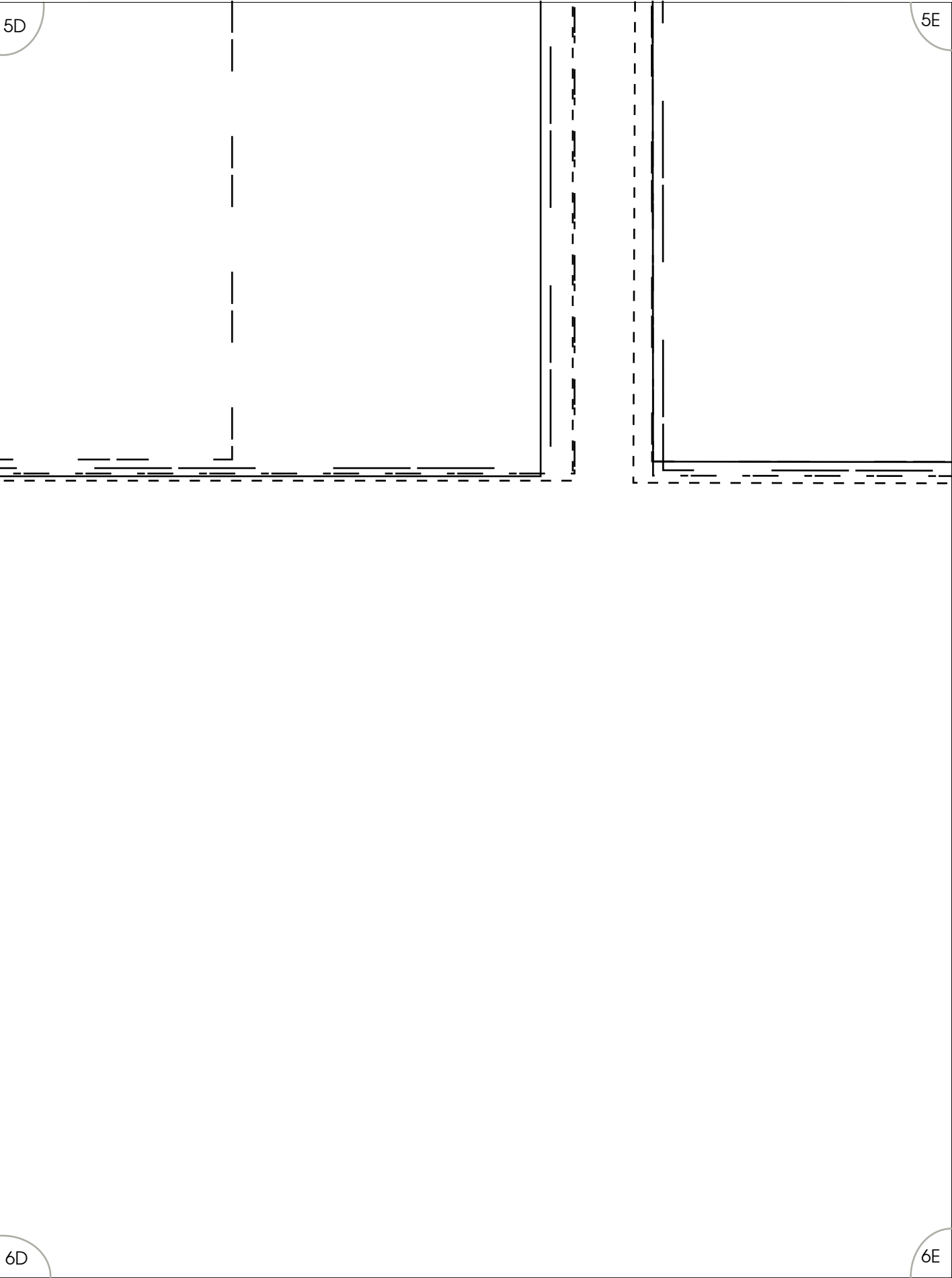
6D

5D

5E

6D

6E



5E

5F

6E

6F

5F

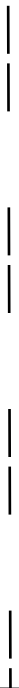
5G

6F

6G

5G

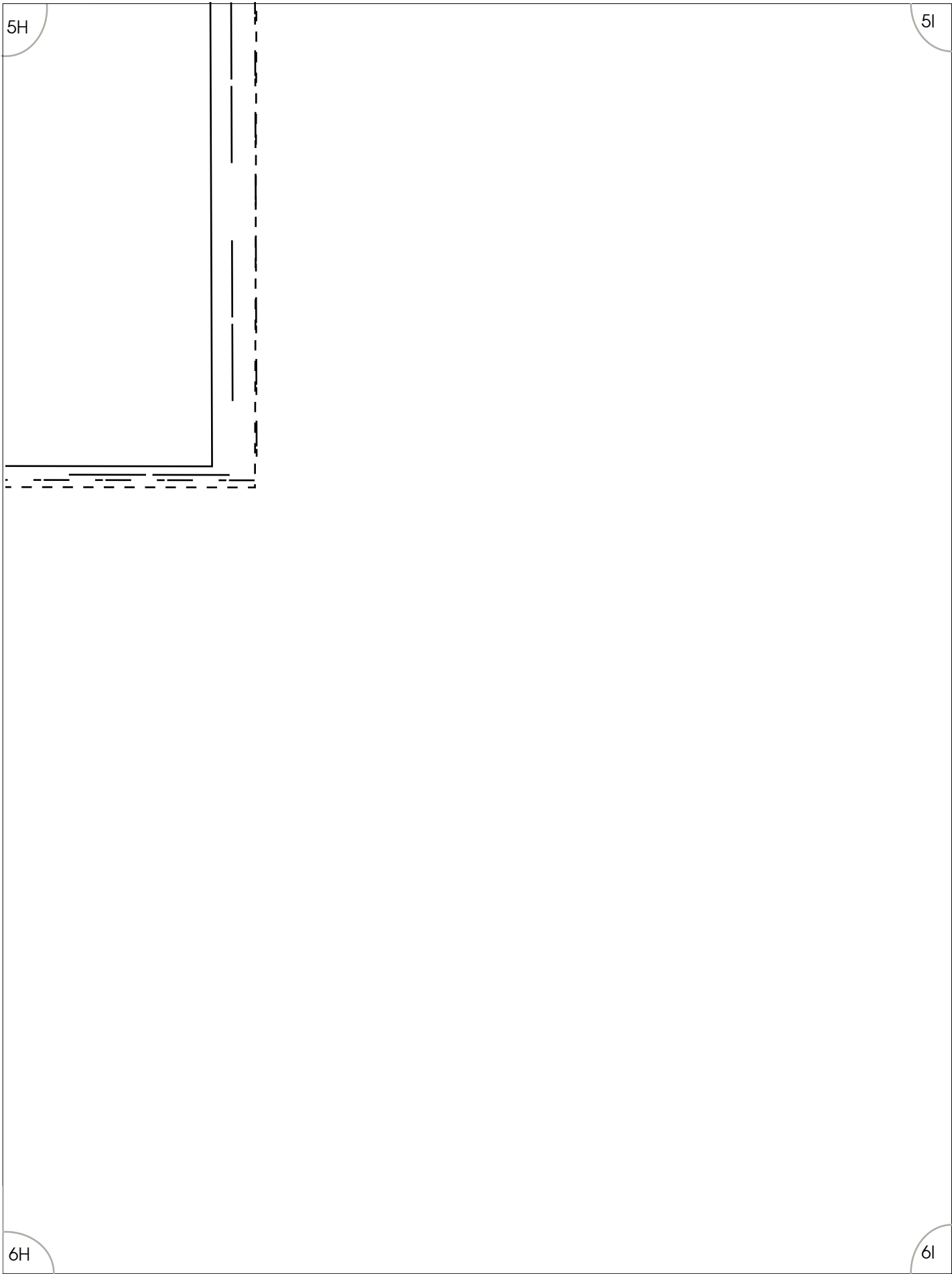
5H



6G

6H





Kristen

SLIP

FEATHER LIGHT SLIP

WWW.SEWTINAGIVENS.COM

FABRIC REQUIREMENTS

Slip .. 54" wide fabric only
2-2/3 yards or 2.43 meters

If making two to layer use
contrasting and complimentary
fabric.

Plus leather lace 3/16" wide or
5-6mm wide.
2 yards or 2 meters

USE LIGHTWEIGHT FABRIC LIKE VOILE, SILK
CHARMEUSE, CHIFFON, GEORGETTE.

A sweet and simple slip dress to make for you. A little Bohemian magic with leather straps and ties. Handkerchief hemline for floaty movement. Wear one or layer one over the other. Lovely in light cotton voile prints.

Pattern Preparation

**SIMPLY PRINT OUT THIS PDF DOWNLOAD
PATTERN ON LETTER SIZE PAPER
(8.5x11 IN US OR EURO SIZE)**

Tape all the join lines together. It's that simple.

For more info see instructions online at
www.sewtinagivens.com

**ONCE ALL TAPED TOGETHER SELECT THE
SIZE YOU WISH TO MAKE, SEE OUR SIZE
CHART AND CUT OUT YOUR PAPER PAT-
TERN PIECES.**

**TIPS: PRINT OUT IN DRAFT MODE TO SAVE
INK, 100% DO NOT SHRINK DOCUMENT,
AND MAKE SURE TO MEASURE THE 3"
SQUARE TO ENSURE SCALE IS CORRECT.**

SIZING IN US

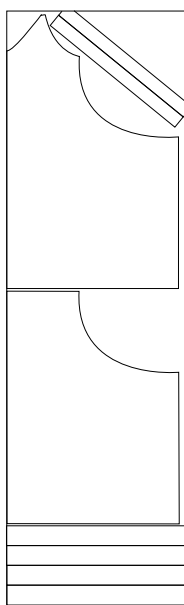
XS ... 2
S 4-6
M 8-10
L 12-14
XL 16-18

SIZING IN UK

XS..... 4-6
S 8-10
M 12-14
L 16-18
XL 20-22

SIZING EURO

XS... 34
S 36-38
M 40-42
L 44-46
XL 48-50



Cutting Instructions

- For your slip, lay the front and back pieces as shown here along the fold of your fabric. Cut both out, cut bias binding strips as shown for armholes and neck these should be 2" wide; plus 4 strips the width of the fabric 4" wide.
- CUT LEATHER into 2 pieces 6" each; and two straps 29-30" in length.

Sewing Instructions

NOTE: ALL SEAMS ARE 3/8"
UNLESS OTHERWISE STATED!

- Follow the diagrams on the next page. Lay the back panel open on a flat surface, right side facing upward. Roll the top edge over to right side 1/4" as in fig.1. and roll again 1/2". Press. Stitch across the top edge as in fig.2.
- Bind the front neck edge with the 2" wide bias strips, by laying a strip along the right side of the fabric, right side of the bias strip facing, stitch across top edge as in fig.3. Press seam allowance upward onto bias strip and roll raw edge of strip to wrong side 1/4" as shown in fig.6. Press. Roll the folded edge of the seam allowance and raw edges as in fig.7. stitch down.
- Repeat binding for front arm holes. See fig.5.
- Place back and front together, right sides facing and pin along curved side edges - see fig.8. Stitch, press.
- Using the wide 4" strips you precut, place one along the bottom front edge, right sides facing as in fig.9. and stitch. Press. Top stitch along the raw edge 1/2" from edge to prevent fraying. if you'd prefer a finished edge, make a narrow rolled hem by rolling it to wrong side 1/4" and again 1/4" and stitching down.
- Repeat for the back panel, see fig.10. Now add the two remaining strips to the sides of the dress hemline - see fig.10. Simply lay the side open on a flat surface and pin the strip along the edge, right sides facing, all the way across and over the side seam. Stitch in place, and press. Trim off the sides if they are longer then the dress fronts so it looks like fig.11. Finish the raw edges on these panels as you did the first ones.
- Pin the 30" leather pieces in place onto the front of your slip as shown in fig.12. Lay them at least 1.5-2" down from the point on the right side of the fabric. Stitch vertically through the leather as shown in fig.13. Being careful to reverse stitches at start and end to secure.
- Using the 6" lengths, make a 3" loop for both, and pin in place at the back (shown in fig.14). Stitch these loops in place - refer to pattern panel for placement. Cross front straps at back and thread through loops and tie. See fig.14.

Kristen SLIP

FEATHER LIGHT SLIP

